



RENOVATIONS UPDATE

Community Hospital Construction News

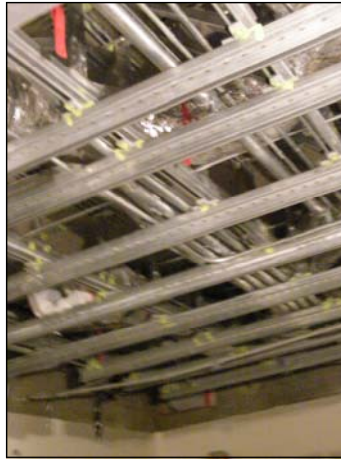
Fall 2008



MAIN LEVEL

MONTEREY— August 2008
By Allison Otto

At the Main Level of the hospital, the imaging rooms are transitioning through various stages. These rooms require extensive work behind the walls, ceilings and floors in order to function properly. The picture to the left shows the Unistrut support system in the ceiling. This is necessary



in order to hold the imaging equipment that will be installed. These devices weigh in at 3,000 pounds each! There will be 11 rooms, each with their own equipment. Another example of the work required is the installation of the cabling for the medical equipment. There are 28 pipe runs in the ceiling (pictured right) and 14 in the floor, per room. These runs encase all the necessary cables that run in between the imaging equipment and the associated computers and devices. In addition, all the rooms are lined with lead board in order to keep the radiation contained within the room. This lead board weighs in at four pounds per square foot. As you can see, these imaging rooms require extensive coordination and preparation before installation can take place.



essary in order to hold the imaging equipment that will be installed. These devices weigh in at 3,000 pounds each! There will be 11 rooms, each with their own equipment. Another example of the work required is the installation of the cabling for the medical equipment. There are 28 pipe runs in the ceiling (pictured right) and 14 in the floor, per room. These runs encase all the necessary cables that run in between the imaging equipment and the associated computers and devices. In addition, all the rooms are lined with lead board in order to keep the radiation contained within the room. This lead board weighs in at four pounds per square foot. As you can see, these imaging rooms require extensive coordination and preparation before installation can take place.

PAVILIONS-AT-A-GLANCE

- 400-Car Parking Garage
- 100 Mature Trees Relocated
- 100,000-SF South Pavilion
- 4 General Surgical Rooms
- Endovascular-equipped Surgical Room
- 2 Ortho/Neuro Surgical
- 2 Cardiac Surgical Rooms
- 100,000-SF Forest Pavilion
- 120 Private Patient Rooms
- 20-Bed Intensive Care Unit
- Healing Garden & Waterfall
- 6,000-SF Mechanical Bunker
- Interim Loading Dock
- Interim Cath Lab
- Food Services Renovations
- E.D. Express & CDU Renovation
- 2 Digital Cardiac Cath Labs
- Enlarged Diagnostic Imaging
- General Renovations
- Seismic Upgrades
- 1.2 Megawatt Co-Generator
- (2) 1250Kw Standby Generators
- (9) New Elevators
- Enhanced Nurse Call System
- And Much More!

Garden Level Update

MONTEREY— August 2008
By Matt Bouquet

The cardio testing rooms on the Garden Level are shaping up with some finishes going into place. Flooring is being installed, as noted from the photo below. Also casework, like the sink



and countertop pictured to the right, is also going into place. Upcoming events include the installation of the handrails and some finish electrical work. Hanging of the doors and installation of the ceiling tiles will soon follow.



Garden North Wing

Monterey—August 2008
By Allison Otto

The Garden North Wing renovation includes approximately 1,900 square feet of newly renovated office space. The former patient rooms are being renovated into the new Social Services Department including a private consultation room and a separate Pharmacy Supervisor's Office. With fresh paint, new carpet, installation of case-work and placing of ceiling tiles, this area will be complete this fall. The windows seen in the photo offer excellent views of the Great Garden and will provide natural light.



RENOVATIONS PROJECT OVERVIEW

Terrace Level

25,000SF—Newly remodeled kitchen/dining facility/nutrition services dept.

Garden Level

35,340SF total remodel including: ICC/CCU waiting lounge; emergency/triage area; cardiopulmonary unit; social services dept; and engineering dept.

Main Level

47,200SF total remodel including: surgery staff support area; nuclear medicine/diagnostic imaging center; patient business services; meditation and chaplain services; new garden café and gift shop; medical records and pharmacy.

Roof Level

2,000SF of remodeled Quality Management offices and medical staff services area.



Renovations Update

Fall 2008

EXECUTIVE EDITOR

Allison L. Otto
email: allison@ottoconstruction.com

CONTRIBUTORS

Dennis Buskirk, Rick McVey, Mike Feuz, Matt Bouquet, Mary Ann Carbone, Paul Morgan, Ron Blue, Mike Bellinger, Mike Dygean, Chuck Silverman, Fred Bensch, Steven Packer, M.D.



CORPORATE HEADQUARTERS

PO Box 2858
Sacramento, CA 95812-2858
Mike Feuz, President
Phone 916.441.6870

BRANCH OFFICE

PO Box 1768
Monterey, CA 93942-1768
Phone 831.625.5015

www.ottoconstruction.com



New Hires

MONTEREY—August 2008
By Allison Otto

Otto Construction has brought on two new team members for the Renovations Phase of the hospital. Jay Tulley has been hired as a Project Manager and Paul Murrer as a Project Superintendent.

Tulley, a registered Civil Engineer and a LEED® Accredited Professional, is a graduate of the University of Florida, with a degree in Materials Engineering. He is the former Co-Chair and current member of the US Green Building Council, Monterey Bay Branch.

Murrer has over 20 years of industry experience including hydro-electric, industrial, commercial, retail, and hospitality. Murrer's responsibilities include reroofing portions of the existing hospital. Murrer holds a degree in Construction Management with a minor in Business Administration from Northern Arizona University and a dual degree from the State University of New York in Mechanical Engineering and Wood Products Engineering. He is a member of the Carpenters Union Local 605.

