



## IN THIS ISSUE

Project Profile  
Sonoma Valley Hospital

Safety Update

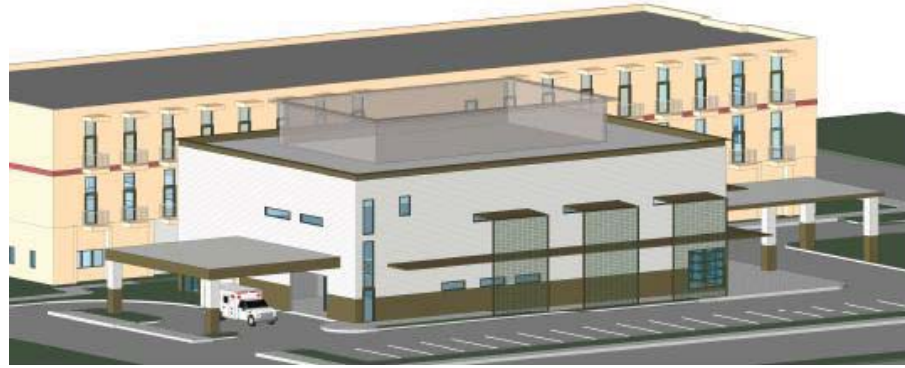
Notes from the Corner  
Office

Employee Focus

Coastal Connection

Otto in the Community

Project Updates



## SONOMA VALLEY HOSPITAL

The Sonoma Valley Health Care District has chosen Otto Construction to begin the design, construction and renovation of the Sonoma Valley Hospital. The selection process came down to three very competitive versions of the project, and Otto, together with Nacht & Lewis Architects, ultimately submitted the best design/build approach that met the needs of the facility as well as the budget. This is already shaping out to be a unique project in that this is the first public health care district in the state to utilize the design-build process, which is more commonly employed by private health care facilities.

The \$23M contract is the culmination of months of planning to hone in the scope, conceptual design and overall cost of the job. The project, designed to satisfy State mandates for seismic safety, will greatly benefit the people of Sonoma by providing new state-of-the-art emergency and operating rooms, create a smoother flow within the hospital for both healthcare workers and patients and upgrade and replace key elements of the facility's infrastructure.

- Construction includes a new 2-story, 16,000 square-foot wing that will house an emergency department on the first floor and operating rooms on the second floor.
- Design is in progress and the project's scheduled completion is Winter/2012
- Project Team: Mike Feuz, Principal; John Hayward, Sr. Project Manager; Mark Hopkins, Project Manager; Rick McVey, Chief Estimator; Robert Ussery, Superintendent



Second Quarter 2010

## SAFETY UPDATE

Otto Construction is proud to announce that as of June 30, 2010 we have completed one full year without an accident. In the construction industry, this is a huge accomplishment. Over the 365 days, we have had an average of 130 employees, 20 project sites, and a total of over 313,520 hours of safe work. Congratulations to each and every employee who has promoted and executed a safe work environment. From office staff to field staff, everyone deserves kudos!



Otto Construction has always hammered in the value of working safely. Fifteen years ago, determined to make safety the first goal on every jobsite, Otto made safety its number one priority. Accidents do happen, but they can also be avoided. As we got better at executing good safety practices, the number of accidents started dropping. This equates to lower experience modification rates (we are currently at .79 compared to the

industry standard of 1.0), lower insurance premiums, and most importantly clients are assured that their projects are built with safety in mind.

Keep up the great work and we all look forward to another safe year!

### BY THE NUMBERS

531 Days since last Lost Time Accident, that's 313,520 hours of safe work!

411 Days since last Recordable Accident, that's 223,736 hours of safe work!

### GOALS SET BY OUR INDUSTRY (2009)

	Accidents	Hours
Lost Time	1.5	200,000
Recordable	5.0	200,000

### OTTO'S TOTALS

Lost time	1.0	207,072
Recordable	3.0	308,072

## NOTES FROM THE CORNER OFFICE

I talk to a lot of people about our company, what makes us unique, what makes us the company we are. As a family owned company for over 60 years, the Otto family's long term vision for the company and its people create a real feeling of family here at Otto. That sense of family is part of the fabric of the company, and we are multi-generational on many levels. There are many different families here at Otto: siblings and third generation employees Allison Otto and John Otto; Carl Barrett and his daughter Melissa Barrenchea; Dennis Buskirk (whose father worked here) and his son Denny and daughter-in-law Jenny; Robert Ussery and his son Joe; my father started with Otto as a laborer in 1969 and retired from Otto in 1995; my sister Ann has been with us since 1984 when she started as an apprentice carpenter and my two daughters have interned here (yes, that's one over to the right). Having these committed, long-term employees to pass on the traditions and values of the company to newer employees is a tremendous resource to Otto and we're proud to be a place where our people want to have other family members work.

As with any family, our family circle grows over time to welcome new members. We're fortunate in these times to be able to welcome a few new folks to the family:

**Stephanie Bolce:** Intern, California State Lottery Headquarters Project  
College: University of Portland, Civil Engineering



**Mari Feuz:** Intern, Estimating Department  
College: University of San Francisco, Biology (minor Chemistry and Gerontology)



**Mike Harvey:** Intern, Feather River Hospital Emergency Department  
College: CSU Chico, Civil Engineering



**Mark Hopkins:** Project Manager, LEED AP  
Sonoma Valley Hospital  
Mark is a re-hire, welcome back!



**John Garayalde:** Project Engineer  
Monterey Office,  
College: CSU Chico, Construction Management



**Caralyn Hethcock:** Project Engineer  
Sacramento Airport  
College: CSU Chico, Construction Management





Second Quarter 2010

## EMPLOYEE FOCUS: DEBORA FEE



Deb has been with Otto Construction for 4 years. She has worked on many projects (often all at the same time!) including the Roseville Energy Park, the Elks Building, L Street Lofts, and most recently the Ebner/Empire Reconstruction. If you have met Deb, you know she is always on the go. She is an excellent multi-tasker, and has more energy than anyone else you will ever meet. Recently we were able to sit down with her and ask her a few questions about her background and her construction experience.

**OTTO: When did you get started in the construction industry?**

Deb: 18 years ago. I started at the Placer County Builder's Exchange as the Executive Director and then moved on to working with general contractors.

**OTTO: What is your current position at Otto Construction?**

Deb: I am currently a Project Manager. My projects include

the Ebner/Empire Building Reconstruction, Township 9/Regional Transit, and the Powerhouse Science Center. I have been a Project Manager with Otto for 4 years.

**OTTO: What is your favorite thing about working at Otto Construction?**

Deb: It is definitely a combination of the people, the dynamics of the company, the history, and the pride Otto Construction takes with each and every project.

**OTTO: Please tell us a little about what you do outside of work?**

Deb: I was born and raised in California. I love riding ATVs, camping, fishing, and I periodically take golf lessons, I have four grown children and three grandchildren (twins who are 5 and a granddaughter turning 1 in July). I just love going home to Colfax and enjoying the scenery after a long day in the City.



## COASTAL CONNECTION

Our Monterey office is keeping busy and since opening in the beginning of the year, we have picked up the following projects:

**Monterey Peninsula College Business & Computer Science Building:** This project is a remodel of the business and computer science building.

**CSU Monterey Bay Mountain Hall Suite E:** Tenant improvements to accommodate the relocation of Human Resource functions and includes demolition, doors, new security, ADA upgrades, and finishes.

**Community Hospital of the Monterey Peninsula Phase III & IV:** This includes remodeling of the medical records, pharmacy, and Engineering Department.

**Carmel Beach Pedestrian Trail:** This project includes construction and improvements for a decomposed granite pedestrian trail and guardrails from Carmel beach to 17 Mile drive in Pebble Beach. (pictured)

## OTTO IN THE COMMUNITY

The Society for the Blind is the region's only agency providing comprehensive services to people of all ages who are blind or visually impaired. However, operating at full capacity, the Society's mission was being greatly hampered by a 40 year old facility that was far too small and outdated to meet the needs of the community. Thus the capital campaign began in 2005 to raise money to renovate a larger building in the downtown area which not only would offer more space for more services, but would also be closer to public transportation. Otto Construction immediately got involved.

In April 2010, the 20,000 square foot renovation was complete at the Society for the Blind's new building at 13th and S Streets. This new space will

allow the agency to significantly expand their services. Otto Construction would like to thank everyone who helped to make this project happen from the leaders of the capital campaign (who still haven't given up since 8,000 square feet still needs renovating), to the generous members of our community who made donations, and to the local subcontractors who donated time and materials to make this project happen.

Mark Foltz, Project Manager, and Brett Post, Superintendent, led the construction team. If you are interested in seeing this wonderful new building, contact Allison Otto, Society for the Blind Board Member.





Second Quarter 2010

## PROJECT UPDATES



### **California Lottery Headquarters, Sacramento**

- Overall project is 155,500 square feet. it will be 6 stories high and is located in Sacramento's River District.
- There is 71,000 square feet of exterior curtain wall and 1,500 ton of structural steel.

*Current status:* Concrete is being placed on the floor decks, along with fireproofing and framing. The central utility plant building block is underway.

### **Ebner/Empire Building Reconstruction, Old Sac**

- Work taking place at the beginning of July includes plaster, balconies, awnings, exterior stairwell, sheet rocking and taping, and painting.
- Window installation will take place the first week of July and painting will take place shortly thereafter.

*Current status:* Construction will be complete in July.



### **Feather River Hospital Expansion, Paradise**

- Groundbreaking took place on June 4
- Expansion includes the addition of a 17,818 SF emergency department, new underground utilities, landscaping, irrigation, and relocating the water main.

*Current status:* Site demolition and grading are complete; underground utilities such as fire water and storm drain are being installed.

### **CSU Chico Student Services Plaza**

- Design/build delivery with Williams + Paddon Architects + Planners
- Includes hardscape, landscape, irrigation, site lighting, outdoor stage
- Scheduled completion date at the beginning of the Fall Semester 2010

*Current status:* Trees are being planted and concrete is being placed daily.



SACRAMENTO  
1717 2nd Street  
Sacramento, CA 95811  
916.441.6870

MONTEREY  
2150 Garden Road, Suite A-1  
Monterey, CA 93940  
831.657.9805

Contact: Allison Otto: [allison@ottoconstruction.com](mailto:allison@ottoconstruction.com)